



**THE CONSUMER
LE CONSOMMATEUR**

*Consumption of Dairy Products
Consommation de produits laitiers*

PER CAPITA CONSUMPTION OF DAIRY PRODUCTS¹

CONSOMMATION DE PRODUITS LAITIERS PAR HABITANT¹

Year	CHEESE / FROMAGE					BUTTER BEURRE	POWDER POUDRE		CONDENSED & EVAPORATED MILK LAIT CONDENSÉ ET ÉVAPORÉ			YOGURT YOGOURT	ICE CREAM / CRÈME GLACÉE ⁵	Année
	Cheddar ²	Specialty Fin	Processed Fondu	Cottage	TOTAL ³		Skim Milk Lait écrémé	Whey Lactosérum	Evaporated Évaporé	Condensed Condensé ⁴	TOTAL			

kg

litres

CANADA

2008	3.95	7.52	2.12	0.90	12.37	2.63	1.86	0.21	0.98	0.08	1.06	7.68	7.20	2008
2007	4.22	7.36	2.23	0.91	12.49	2.65	1.78	0.49	1.06	0.05	1.11	7.13	8.41	2007
2006	4.14	7.21	2.29	0.85	12.20	2.83	2.42	0.49	1.05	0.10	1.14	6.98	9.21	2006
2005	3.97	7.20	2.25	0.85	12.02	3.15	2.17	0.64	1.05	0.07	1.12	6.76	9.83	2005
2004	3.78	7.34	2.35	0.82	11.94	3.45	1.92	0.80	0.92	0.06	0.98	6.30	9.14	2004
2003	3.88	6.98	2.22	0.78	11.63	3.23	1.57	0.75	0.63	0.07	0.71	5.85	9.25	2003
2002	3.77	6.97	2.25	0.79	11.53	3.29	1.47	1.33	1.18	0.05	1.22	5.39	9.47	2002
2001	3.84	6.86	2.47	0.78	11.48	3.36	1.45	1.48	1.05	0.03	1.07	4.88	9.22	2001
2000	3.91	7.15	2.35	0.79	11.85	2.99	1.14	1.22	1.29	-	1.29	4.59	8.62	2000
1999	4.00	6.82	2.39	0.71	11.53	2.85	1.45	1.07	1.32	-	1.32	4.05	10.02	1999
1998	3.85	6.89	2.25	0.71	11.45	2.89	1.15	1.33	1.26	0.01	1.28	3.46	10.18	1998
1997	3.97	7.13	2.44	0.72	11.82	2.63	1.04	1.52	1.61	0.15	1.76	3.19	10.35	1997
1996	3.76	6.18	2.58	0.76	10.70	2.87	1.28	1.74	1.62	0.18	1.80	3.17	10.99	1996
1995	3.90	6.13	2.74	0.83	10.87	2.76	1.05	1.58	1.83	0.31	2.15	3.05	11.48	1995
1994	3.87	6.12	2.77	0.87	10.85	2.89	1.08	1.72	2.01	0.25	2.27	3.09	11.80	1994
1993	3.77	6.02	2.71	0.88	10.68	2.88	1.14	1.79	2.50	0.13	2.63	3.04	10.95	1993
1992	3.67	5.87	2.79	0.92	10.46	2.80	1.20	1.75	2.50	0.27	2.77	2.91	10.38	1992
1991	3.80	5.69	2.77	1.03	10.52	2.99	1.28	2.01	2.49	0.28	2.77	2.99	10.92	1991
1990	3.81	5.64	3.05	1.12	10.57	3.28	1.51	1.28	1.73	0.24	1.97	3.09	11.47	1990
1989	4.15	5.73	2.94	1.11	10.98	3.47	2.27	1.84	2.43	0.32	2.75	3.26	11.44	1989
1988	4.05	5.59	2.98	1.16	10.80	3.71	1.95	1.82	2.23	0.33	2.56	3.21	11.98	1988
1987	4.16	5.44	2.73	1.18	10.78	3.80	2.18	2.49	2.49	0.43	2.91	3.04	11.76	1987

Note: Calculations do not take into account interprovincial movements of final products

- Nil

¹ Consumption = [Beginning Stocks + Production + Imports - Exports - Ending Stocks] / Population. Includes quantities imported under the Import for Re-export Program

² Includes cheese used in the making of processed cheese

³ Total = Specialty + Cheddar + Cottage

⁴ Since January 1992, stocks and production of condensed whole milk are confidential

⁵ Includes hard and soft ice cream

Source: Statistics Canada, Tables 002-0010, 051-0005

Calculations done by AAFC-AID, Dairy Section

dpconsumption.xls

Note : Les calculs ne tiennent pas compte des échanges interprovinciaux de produits finis

- Nul

¹ Consommation = [Stocks au début + production + imports - exports - stocks à la fin] / population. Inclut les quantités importées sous le Programme de l'importation pour la ré-exportation

² Comprend le fromage cheddar utilisé dans la fabrication du fromage fondu

³ Total = Spécialité + cheddar + cottage

⁴ A partir de janvier 1992, les stocks et la production de lait condensé entier sont confidentiels

⁵ Comprend la crème glacée dure et molle

Source : Statistique Canada, Tableaux 002-0010, 051-0005

Calculs réalisés par AAC-DIA, Secteur laitier

PER CAPITA CONSUMPTION OF MILK & CREAM

CONSOMMATION DE LAIT ET DE CRÈME PAR HABITANT

Year	FLUID MILK / LAIT DE CONSOMMATION ¹							CREAM / CRÈME ¹					Année
	3.25%	2%	1%	Skim / Écrémé	Chocolate / Chocolat	Buttermilk / Babeurre	TOTAL	10%	18%	35%	Sour / Sure	TOTAL	

litres

CANADA

2008	11.34	37.37	18.16	8.68	6.07	0.43	82.07	2.97	3.09	1.22	1.20	8.48	2008
2007	11.92	37.88	18.15	8.73	5.76	0.45	82.90	3.02	3.11	1.21	1.37	8.71	2007
2006	12.34	38.38	18.09	8.69	5.50	0.42	83.42	3.04	2.98	1.17	1.39	8.58	2006
2005	12.59	38.76	17.84	8.74	5.47	0.42	83.82	3.10	2.77	1.16	1.33	8.35	2005
2004	13.07	40.05	17.88	8.63	5.39	0.44	85.46	3.21	2.56	1.13	1.35	8.24	2004
2003	13.43	40.28	17.44	8.53	5.07	0.43	85.18	3.04	2.37	1.18	1.35	7.94	2003
2002	13.54	40.56	17.24	8.83	4.94	0.42	85.53	2.91	1.96	1.10	1.29	7.27	2002
2001	14.03	41.80	17.21	8.73	4.87	0.39	87.03	2.95	1.80	1.03	1.36	7.13	2001
2000	14.20	43.23	17.25	8.59	4.54	0.39	88.21	2.92	1.57	1.05	1.28	6.83	2000
1999	14.13	43.58	16.56	8.36	4.67	0.43	87.73	2.88	1.36	0.92	1.20	6.36	1999
1998	14.78	44.68	16.41	8.22	4.25	0.43	88.77	2.92	1.11	0.90	1.11	6.04	1998
1997	15.02	45.48	16.19	8.05	4.02	0.38	89.14	2.86	0.95	0.85	0.96	5.62	1997
1996	15.40	47.09	15.46	7.76	3.95	0.40	90.05	2.89	0.79	0.87	0.92	5.47	1996
1995	15.94	48.32	14.32	7.30	4.03	0.42	90.32	2.90	0.75	0.86	0.95	5.46	1995
1994	16.81	50.16	13.00	6.60	3.81	0.42	90.80	2.81	0.65	0.84	1.02	5.33	1994
1993	17.16	51.62	11.12	6.19	3.38	0.42	89.90	2.80	0.57	0.81	1.04	5.22	1993
1992	18.42	53.99	10.20	6.26	3.28	0.44	92.60	2.80	0.53	0.84	0.95	5.12	1992
1991	19.94	55.81	8.52	6.37	3.42	0.46	94.54	2.81	0.49	0.82	0.99	5.10	1991
1990	21.93	56.95	5.85	6.33	3.89	0.48	95.44	2.92	0.48	0.85	0.99	5.25	1990
1989	24.23	61.95	-	5.79	3.92	0.50	96.38	2.74	0.45	0.84	0.85	4.88	1989
1988	26.84	62.68	-	5.43	3.99	0.51	99.45	2.89	0.44	0.86	0.82	5.01	1988
1987	28.59	62.53	-	5.26	3.99	0.52	100.89	2.89	0.43	0.90	0.80	5.02	1987

- Nil

¹ Annual fluid milk and cream sales divided by the Canadian population

Note: Calculations do not take into account interprovincial movements of final products

Source: Statistics Canada, Tables 003-0012 and 051-0005

Calculations done by AAFC-AID, Dairy Section

camilkcream.xls

- Nul

¹ Ventes annuelles de lait de consommation et de crème divisées par la population canadienne

Note : Les calculs ne tiennent pas compte des échanges interprovinciaux de produits finis

Source : Statistique Canada, Tableaux 003-0012 et 051-0005

Calculs réalisés par AAC-DIA, Secteur laitier

PER CAPITA CONSUMPTION OF MILK & CREAM

CONSOMMATION DE LAIT ET DE CRÈME PAR HABITANT

Year	FLUID MILK / LAIT DE CONSOMMATION ¹							CREAM / CRÈME ¹					Année
	3.25%	2%	1%	Skim / Écrémé	Chocolate / Chocolat	Buttermilk / Babeurre	TOTAL	10%	18%	35%	Sour / Sure	TOTAL	

litres

BRITISH COLUMBIA / COLOMBIE-BRITANNIQUE

2008	12.64	30.99	19.30	12.44	2.07	0.78	78.21	3.75	x	1.78	1.06	6.59	2008
2007	13.85	30.09	18.53	12.12	2.06	0.72	77.36	3.82	x	1.73	1.23	6.78	2007
2006	14.66	29.30	18.01	11.80	1.97	0.74	76.48	3.80	x	1.61	1.25	6.66	2006
2005	15.02	29.54	18.33	11.67	1.93	0.83	77.31	3.82	x	1.54	1.24	6.60	2005
2004	15.47	29.87	18.09	11.53	2.64	0.86	78.46	3.82	x	1.67	1.22	6.71	2004
2003	15.65	30.39	18.16	11.74	2.46	0.78	79.19	3.70	x	1.82	1.22	6.74	2003
2002	15.91	30.93	18.28	11.94	2.48	0.78	80.31	3.68	x	1.73	1.20	6.61	2002
2001	16.41	31.79	18.90	11.90	2.81	0.79	82.60	3.77	x	1.65	1.23	6.66	2001
2000	16.81	32.50	18.90	11.82	2.65	0.81	83.50	3.74	x	1.62	1.23	6.59	2000
1999	17.24	33.06	18.68	11.77	2.45	0.82	84.02	3.62	x	1.33	1.05	6.00	1999
1998	16.83	32.71	17.85	11.37	1.79	0.69	81.23	3.52	x	1.28	0.92	5.72	1998
1997	16.03	32.37	16.76	10.61	1.90	0.52	78.18	3.46	x	1.15	1.21	5.83	1997
1996	16.76	36.78	17.57	10.74	3.03	0.57	85.45	3.63	x	1.24	1.21	6.07	1996
1995	18.14	38.45	16.51	10.44	3.37	0.94	87.85	4.03	x	1.40	1.48	6.90	1995
1994	19.64	41.54	14.69	9.19	3.59	1.00	89.66	4.16	x	1.37	1.28	6.81	1994
1993	20.13	42.51	13.68	8.58	3.09	1.04	89.03	4.21	x	1.37	1.23	6.81	1993
1992	20.44	43.49	13.03	8.41	3.02	1.06	89.47	4.12	x	1.34	1.25	6.71	1992
1991	21.12	44.86	11.90	8.27	3.03	1.12	90.31	4.07	x	1.36	1.22	6.65	1991
1990	22.80	47.02	10.10	8.07	3.39	1.19	92.56	4.05	x	1.43	1.31	6.79	1990
1989	23.22	55.49	-	7.69	3.30	1.24	90.93	4.10	x	1.45	1.25	6.80	1989
1988	25.23	55.62	-	7.91	2.95	1.26	92.97	4.03	x	1.44	1.23	6.69	1988
1987	26.68	55.56	-	7.61	2.81	1.29	93.94	3.95	...	1.42	1.18	6.56	1987

... Not applicable

- Nil

x Confidential

¹ Annual fluid milk and cream sales divided by the Canadian population

Note: Calculations do not take into account interprovincial movements of final products

Source: Statistics Canada, Tables 003-0012 and 051-0005

Calculations done by AAFC-AID, Dairy Section

bcmilkcream.xls

... Sans objet

- Nul

x Confidentielle

¹ Ventes annuelles de lait de consommation et de crème divisées par la population canadienne

Les calculs ne tiennent pas compte des échanges interprovinciaux de produits finis

Source : Statistique Canada, Tableaux 003-0012 et 051-0005

Calculs réalisés par AAC-DIA, Secteur laitier

PER CAPITA CONSUMPTION OF MILK & CREAM

CONSOMMATION DE LAIT ET DE CRÈME PAR HABITANT

Year	FLUID MILK / LAIT DE CONSOMMATION ¹							CREAM / CRÈME ¹					Année
	3.25%	2%	1%	Skim / Écrémé	Chocolate / Chocolat	Buttermilk / Babeurre	TOTAL	10%	18%	35%	Sour / Sure	TOTAL	

litres

ALBERTA

2008	11.94	35.98	24.12	12.24	7.99	0.62	92.89	3.41	x	1.68	0.34	5.43	2008
2007	12.43	36.20	24.26	12.70	8.29	0.72	94.60	3.36	x	1.68	0.41	5.45	2007
2006	13.01	37.35	24.78	12.70	8.44	0.71	96.99	3.46	x	1.68	0.50	5.64	2006
2005	12.96	37.55	25.55	12.71	8.83	0.74	98.34	3.58	x	1.63	0.61	5.82	2005
2004	12.93	37.94	25.19	12.21	8.27	0.65	97.19	3.50	x	1.54	0.74	5.78	2004
2003	12.96	39.09	25.41	12.39	7.58	0.64	98.06	3.57	x	1.65	0.89	6.12	2003
2002	13.33	40.96	26.08	12.72	7.45	0.68	101.22	3.81	x	1.49	1.07	6.37	2002
2001	14.29	43.40	27.22	12.91	8.06	0.70	106.58	3.98	x	1.35	1.30	6.62	2001
2000	14.50	43.60	26.89	12.88	7.36	0.66	105.88	3.58	x	1.33	1.38	6.29	2000
1999	14.67	43.77	26.14	12.59	7.10	0.66	104.93	3.67	x	1.28	1.46	6.41	1999
1998	14.65	44.96	25.38	12.81	7.26	0.90	105.96	3.79	x	1.34	1.39	6.52	1998
1997	15.35	46.57	25.51	13.25	6.89	1.10	108.67	4.03	x	1.36	1.46	6.85	1997
1996	14.72	43.43	22.55	12.28	6.77	1.11	100.88	3.60	x	1.32	1.41	6.33	1996
1995	13.74	45.36	21.71	11.41	7.21	0.77	100.20	3.07	x	1.27	1.76	6.10	1995
1994	13.92	45.70	19.63	10.27	6.40	0.56	96.48	2.80	x	1.20	1.68	5.68	1994
1993	14.60	46.64	18.30	9.86	5.52	0.58	95.49	2.89	x	1.12	1.57	5.58	1993
1992	16.58	50.31	18.08	10.38	5.42	0.62	101.40	2.92	x	1.13	1.58	5.64	1992
1991	17.40	51.96	16.59	9.91	5.54	0.67	102.08	2.95	x	1.13	1.69	5.77	1991
1990	18.60	54.23	14.12	9.46	5.92	0.73	103.04	3.07	x	1.12	1.76	5.95	1990
1989	19.68	68.78	-	8.63	5.69	0.74	103.52	3.00	x	1.11	0.89	5.00	1989
1988	20.84	67.64	-	8.90	5.39	0.72	103.49	3.04	x	1.13	0.72	4.89	1988
1987	22.16	67.22	-	8.87	5.21	0.76	104.23	2.97	...	1.09	0.78	4.84	1987

... Not applicable

- Nil

x Confidential

¹ Annual fluid milk and cream sales divided by the Canadian population

Note: Calculations do not take into account interprovincial movements of final products

Source: Statistics Canada, Tables 003-0012 and 051-0005

Calculations done by AAFC-AID, Dairy Section

abmilkcream.xls

... Sans objet

- Nul

x Confidentielle

¹ Ventes annuelles de lait de consommation et de crème divisées par la population canadienne

Note: Les calculs ne tiennent pas compte des échanges interprovinciaux de produits finis

Source : Statistique Canada, Tableaux 003-0012 et 051-0005

Calculs réalisés par AAC-DIA, Secteur laitier

PER CAPITA CONSUMPTION OF MILK & CREAM

CONSOMMATION DE LAIT ET DE CRÈME PAR HABITANT

Year	FLUID MILK / LAIT DE CONSOMMATION ¹							CREAM / CRÈME ¹					Année
	3.25%	2%	1%	Skim / Écrémé	Chocolate / Chocolat	Buttermilk / Babeurre	TOTAL	10%	18%	35%	Sour / Sure	TOTAL	

litres

MANITOBA

2008	8.61	31.64	22.46	10.81	x	x	73.52	2.27	x	1.11	x	3.38	2008
2007	9.07	33.19	22.91	11.35	x	x	76.52	2.13	x	1.20	x	3.33	2007
2006	9.79	35.92	26.18	12.50	x	x	84.39	2.39	x	1.08	x	3.47	2006
2005	9.40	34.24	24.18	12.35	x	x	80.17	3.31	x	1.23	x	4.54	2005
2004	9.74	35.18	24.66	11.85	x	x	81.43	2.67	x	1.09	x	3.76	2004
2003	9.78	35.36	24.19	11.65	x	x	80.97	2.50	x	1.00	x	3.50	2003
2002	10.01	35.64	24.46	11.77	x	x	81.88	1.91	x	1.37	x	3.28	2002
2001	10.60	36.97	25.29	12.18	x	x	85.04	1.83	x	1.05	x	2.87	2001
2000	11.24	38.50	27.64	13.45	x	x	90.82	2.69	x	1.00	x	3.68	2000
1999	11.70	37.59	24.27	12.19	x	x	85.75	2.50	x	0.84	x	3.34	1999
1998	12.29	37.93	24.60	12.06	x	x	86.89	2.88	x	0.81	x	3.70	1998
1997	12.82	39.33	24.13	12.15	x	x	88.43	2.60	x	0.84	x	3.44	1997
1996	14.21	41.05	25.10	12.53	4.32	0.53	97.75	2.65	x	0.81	x	3.45	1996
1995	14.47	41.02	23.02	12.06	5.23	0.63	96.43	2.35	x	0.79	x	3.14	1995
1994	15.13	42.24	21.51	11.20	4.75	0.63	95.46	2.44	0.13	0.82	1.06	4.46	1994
1993	16.08	43.31	20.78	10.89	3.83	0.64	95.53	2.82	0.19	0.90	1.73	5.63	1993
1992	17.12	43.97	19.03	10.54	3.72	0.69	95.07	1.91	0.16	1.14	1.47	4.68	1992
1991	18.44	44.70	17.23	10.25	3.59	0.75	94.96	2.11	0.15	0.90	1.77	4.93	1991
1990	20.14	47.19	14.76	9.70	4.05	0.74	96.58	2.06	0.15	0.91	1.75	4.87	1990
1989	22.03	62.46	-	8.99	3.93	0.79	98.20	2.26	0.13	0.89	1.80	5.08	1989
1988	24.73	62.04	-	8.69	3.97	0.81	100.24	2.14	0.11	0.85	1.68	4.78	1988
1987	26.26	59.70	-	9.33	3.91	0.82	100.01	2.14	0.09	0.93	1.63	4.80	1987

- Nil

x Confidential

¹ Annual fluid milk and cream sales divided by the Canadian population

Note: Calculations do not take into account interprovincial movements of final products

Source: Statistics Canada, Tables 003-0012 and 051-0005

Calculations done by AAFC-AID, Dairy Section

mbmilkcream.xls

- Nul

x Confidentielle

¹ Ventes annuelles de lait de consommation et de crème divisées par la population canadienne

Note : Les calculs ne tiennent pas compte des échanges interprovinciaux de produits finis

Source : Statistique Canada, Tableaux 003-0012 et 051-0005

Calculs réalisés par AAC-DIA, Secteur laitier

PER CAPITA CONSUMPTION OF MILK & CREAM

CONSOMMATION DE LAIT ET DE CRÈME PAR HABITANT

Year	FLUID MILK / LAIT DE CONSOMMATION ¹							CREAM / CRÈME ¹					Année
	3.25%	2%	1%	Skim / Écrémé	Chocolate / Chocolat	Buttermilk / Babeurre	TOTAL	10%	18%	35%	Sour / Sure	TOTAL	

litres

ONTARIO

2008	10.10	38.39	18.35	8.47	7.02	0.56	82.88	3.20	4.18	0.96	1.46	9.80	2008
2007	10.81	39.46	18.80	8.50	6.66	0.59	84.83	3.29	4.36	0.95	1.83	10.43	2007
2006	11.27	40.16	18.74	8.46	6.35	0.48	85.46	3.36	4.34	0.93	1.76	10.39	2006
2005	11.27	40.67	18.33	8.44	6.40	0.43	85.55	3.39	4.16	0.94	1.73	10.22	2005
2004	11.88	42.93	18.73	8.66	6.32	0.50	89.02	3.71	3.94	0.87	1.81	10.34	2004
2003	12.14	42.85	17.99	8.47	5.88	0.50	87.84	3.40	3.80	0.97	1.76	9.93	2003
2002	11.80	42.81	17.72	9.19	5.85	0.47	87.84	3.16	3.18	0.78	1.65	8.76	2002
2001	11.94	44.48	17.12	8.87	5.50	0.39	88.30	3.17	3.05	0.74	1.84	8.80	2001
2000	11.53	46.43	17.17	8.32	4.96	0.40	88.80	3.19	2.61	0.87	1.66	8.33	2000
1999	10.79	46.93	16.32	8.00	5.46	0.45	87.95	3.15	2.28	0.70	1.44	7.57	1999
1998	11.21	48.06	16.44	7.78	4.71	0.38	88.58	3.12	1.86	0.62	1.41	7.00	1998
1997	11.67	48.86	16.74	7.65	4.51	0.27	89.71	3.05	1.59	0.59	1.19	6.42	1997
1996	11.61	51.70	15.75	7.17	4.13	0.32	90.68	3.10	1.24	0.54	1.24	6.12	1996
1995	11.62	52.90	14.52	6.59	4.07	0.34	90.03	3.13	1.11	0.53	1.10	5.87	1995
1994	12.20	55.73	13.41	5.97	3.96	0.40	91.67	2.97	0.93	0.51	1.37	5.78	1994
1993	12.30	59.84	10.07	5.44	3.65	0.41	91.72	2.99	0.82	0.52	1.42	5.74	1993
1992	12.93	62.94	8.64	5.58	3.52	0.40	94.01	3.14	0.76	0.54	1.23	5.66	1992
1991	14.43	65.93	6.13	6.07	3.81	0.44	96.80	3.07	0.70	0.52	1.30	5.59	1991
1990	15.92	68.64	2.47	6.49	4.41	0.46	98.38	3.27	0.69	0.55	1.28	5.79	1990
1989	17.39	71.04	-	5.97	4.57	0.49	99.45	3.22	0.64	0.49	1.19	5.54	1989
1988	18.93	73.20	-	5.02	4.75	0.52	102.43	3.29	0.60	0.56	1.17	5.62	1988
1987	19.78	74.45	-	4.68	4.72	0.55	104.18	3.23	0.54	0.56	1.12	5.46	1987

- Nil

¹ Annual fluid milk and cream sales divided by the Canadian population

Note: Calculations do not take into account interprovincial movements of final products

Source: Statistics Canada, Tables 003-0012 and 051-0005

Calculations done by AAFC-AID, Dairy Section

onmilkcream.xls

- Nul

¹ Ventes annuelles de lait de consommation et de crème divisées par la population canadienne

Note : Les calculs ne tiennent pas compte des échanges interprovinciaux de produits finis

Source : Statistique Canada, Tableaux 003-0012 et 051-0005

Calculs réalisés par AAC-DIA, Secteur laitier

PER CAPITA CONSUMPTION OF MILK & CREAM

CONSOMMATION DE LAIT ET DE CRÈME PAR HABITANT

Year	FLUID MILK / LAIT DE CONSOMMATION ¹							CREAM / CRÈME ¹					Année
	3.25%	2%	1%	Skim / Écrémé	Chocolate / Chocolat	Buttermilk / Babeurre	TOTAL	10%	18%	35%	Sour / Sure	TOTAL	

litres

QUEBEC / QUÉBEC

2008	14.25	45.39	13.44	4.65	4.84	x	82.58	2.72	1.77	1.40	0.55	6.44	2008
2007	14.59	46.38	13.47	4.83	3.99	x	83.26	2.79	1.63	1.41	0.43	6.26	2007
2006	14.71	46.40	13.13	4.90	3.42	x	82.56	2.80	1.47	1.37	0.43	6.07	2006
2005	15.48	46.99	12.71	5.23	3.37	x	83.78	2.80	1.35	1.36	0.44	5.95	2005
2004	16.02	47.80	12.54	4.85	3.14	x	84.35	2.82	1.20	1.33	0.44	5.79	2004
2003	16.81	47.69	12.13	4.67	3.23	0.12	84.65	2.67	1.01	1.30	0.44	5.42	2003
2002	17.26	47.49	11.57	4.55	2.98	0.13	83.98	2.55	0.85	1.32	0.44	5.16	2002
2001	18.07	47.99	11.77	4.60	2.90	0.13	85.46	2.54	0.76	1.25	0.35	4.91	2001
2000	18.77	49.97	11.88	4.82	2.81	0.13	88.37	2.49	0.75	1.20	0.32	4.77	2000
1999	18.96	50.25	11.49	4.77	2.83	0.19	88.50	2.43	0.69	1.14	0.56	4.81	1999
1998	20.86	52.30	11.50	4.60	2.72	0.25	92.22	2.60	0.58	1.14	0.36	4.68	1998
1997	20.91	53.31	10.95	4.48	2.54	0.21	92.40	2.44	0.51	1.09	0.13	4.17	1997
1996	21.80	53.61	10.45	4.47	2.21	0.21	92.76	2.60	0.48	1.21	0.15	4.44	1996
1995	23.19	54.71	9.46	4.26	2.43	0.19	94.25	2.66	0.55	1.15	0.19	4.54	1995
1994	24.29	55.04	8.45	3.95	2.10	0.11	93.95	2.57	0.51	1.10	0.27	4.45	1994
1993	24.32	53.32	7.53	3.74	1.91	0.10	90.92	2.36	0.47	1.03	0.28	4.14	1993
1992	26.74	55.56	7.17	3.78	2.00	0.17	95.42	2.31	0.47	1.09	0.30	4.18	1992
1991	28.97	56.59	6.21	3.84	2.14	0.14	97.89	2.43	0.47	1.06	0.30	4.27	1991
1990	32.10	54.39	4.04	3.50	2.57	0.14	96.72	2.55	0.49	1.11	0.30	4.45	1990
1989	36.80	56.32	-	3.01	2.59	0.12	98.84	1.91	0.48	1.14	0.21	3.74	1989
1988	40.51	55.37	-	2.79	2.62	0.10	101.39	2.43	0.52	1.14	0.21	4.30	1988
1987	43.43	53.88	-	2.76	2.77	0.09	102.94	2.59	0.64	1.28	0.21	4.73	1987

- Nil

x Confidential

¹ Annual fluid milk and cream sales divided by the Canadian population

Note: Calculations do not take into account interprovincial movements of final products

Source: Statistics Canada, Tables 003-0012 and 051-0005

Calculations done by AAFC-AID, Dairy Section

qcmilkcream.xls

- Nul

x Confidentielle

¹ Ventes annuelles de lait de consommation et de crème divisées par la population canadienne

Note : Les calculs ne tiennent pas compte des échanges interprovinciaux de produits finis

Source : Statistique Canada, Tableaux 003-0012 et 051-0005

Calculs réalisés par AAC-DIA, Secteur laitier



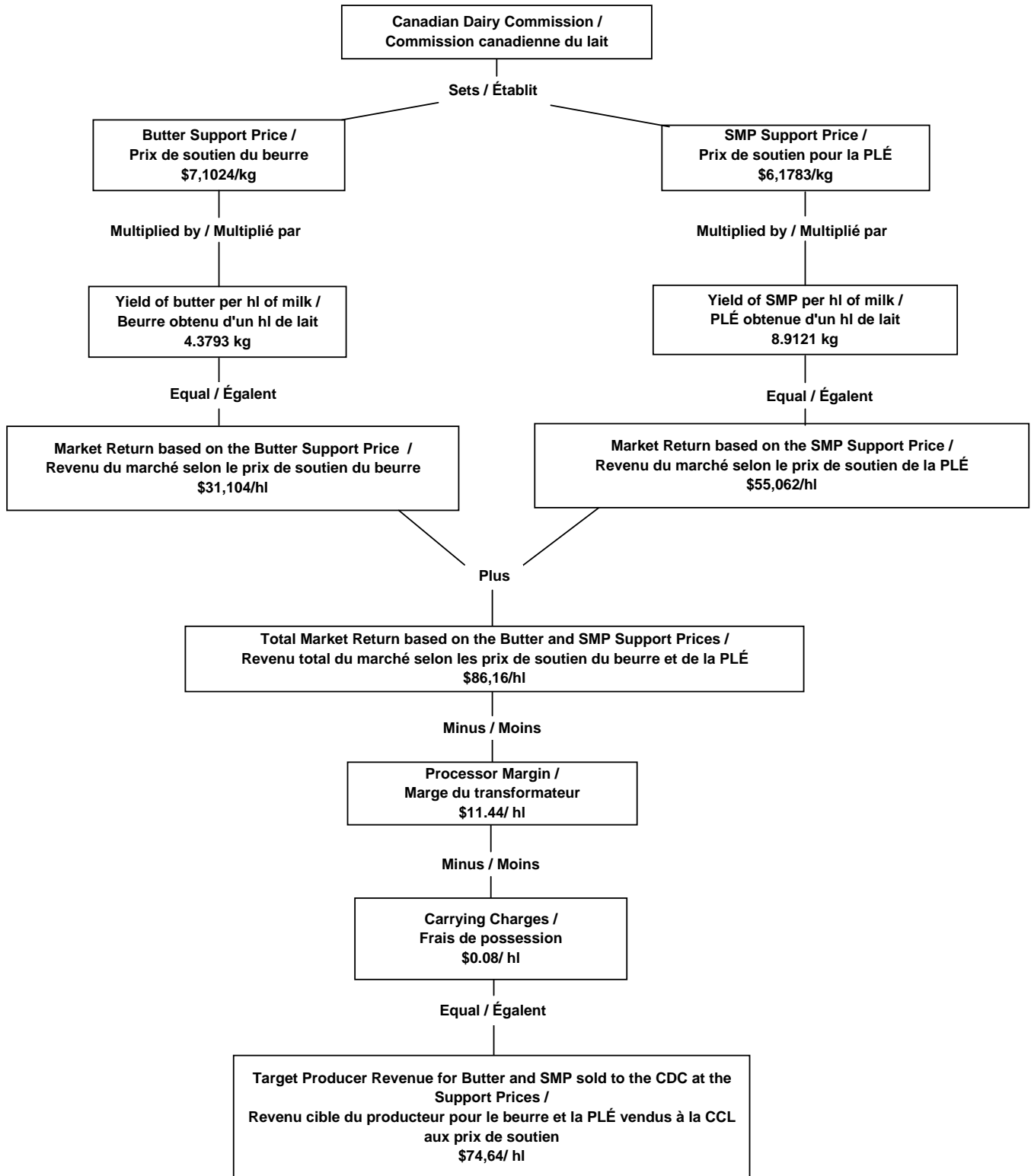
**THE CONSUMER
LE CONSOMMATEUR**

*Prices and Expenditures
Prix et dépenses*

THE INDUSTRIAL MILK SUPPORT PRICE SYSTEM

SYSTÈME D'ÉTABLISSEMENT DES PRIX DE SOUTIEN DU LAIT DE TRANSFORMATION

February 1, 2009 Prices / Prix au 1er février 2009



Note: 3.6 kg butterfat per hectolitre
Source: Canadian Dairy Commission
dm90904.xls

Note : 3.6 kg de matière grasse par hectolitre
Source : Commission canadienne du lait

**CONSUMER PRICE INDEXES FOR CANADA
INDICES DES PRIX À LA CONSOMMATION DU CANADA
(2002=100)**

PRODUCTS	2003		2004		2005		2006		2007		2008		PRODUITS
	Index / Indice	% ±	Index / Indice	% ±	Index / Indice	% ±	Index / Indice	% ±	Index / Indice	% ±	Index / Indice	% ±	
Dairy Products	102.9	2.9%	105.5	2.5%	111.1	5.3%	115.7	4.2%	119.9	3.6%	124.6	3.9%	Produits laitiers
Fresh Milk	103.1	3.1%	104.2	1.1%	108.8	4.5%	112.0	2.9%	116.9	4.3%	123.0	5.2%	Lait frais
Butter	104.1	4.1%	106.7	2.5%	115.6	8.4%	117.9	2.0%	119.7	1.5%	123.6	3.3%	Beurre
Cheese	103.0	3.0%	106.4	3.4%	112.3	5.6%	118.6	5.6%	123.0	3.7%	125.8	2.3%	Fromage
Fats & Oils	103.8	3.8%	106.9	3.0%	108.6	1.6%	110.3	1.6%	114.2	3.5%	129.7	13.6%	Matières grasses et huiles
Coffee & Tea	100.8	0.8%	102.7	1.9%	106.1	3.3%	109.8	3.5%	110.3	0.5%	112.4	1.8%	Café et thé
Non-alcoholic Beverages	99.4	-0.6%	99.2	-0.3%	103.4	4.2%	103.8	0.4%	106.4	2.5%	106.5	0.0%	Boissons non alcoolisées
Fresh or Frozen Beef	100.7	0.7%	104.2	3.5%	106.1	1.8%	106.2	0.1%	109.1	2.7%	111.3	2.0%	Boeuf frais ou congelé
Fresh or Frozen Pork	100.0	0.0%	105.8	5.7%	106.4	0.6%	100.9	-5.2%	101.5	0.6%	102.9	1.4%	Porc frais ou congelé
Fresh or Frozen Chicken	105.9	5.9%	114.0	7.7%	114.2	0.1%	114.6	0.4%	122.9	7.2%	128.0	4.1%	Volaille fraîche ou congelée
Eggs	104.9	4.9%	107.7	2.7%	109.1	1.3%	111.9	2.6%	118.4	5.8%	123.3	4.1%	Oeufs
Fresh Fruit	96.5	-3.5%	97.9	1.5%	96.2	-1.7%	98.4	2.2%	99.6	1.2%	101.2	1.6%	Fruits frais
Fresh Vegetables	92.1	-7.9%	88.9	-3.5%	89.9	1.1%	95.3	6.1%	95.2	-0.2%	96.5	1.5%	Légumes frais
Bakery & Other Cereal Products	104.3	4.3%	107.0	2.6%	109.8	2.6%	113.6	3.5%	118.1	4.0%	132.4	12.1%	Produits de boulangerie et autres produits céréaliers
Food	101.7	1.7%	103.8	2.0%	106.4	2.5%	108.9	2.4%	111.8	2.6%	115.7	3.5%	Aliments
Food purchased from Stores	101.4	1.4%	103.2	1.8%	105.6	2.3%	108.0	2.3%	110.9	2.6%	115.2	3.9%	Aliments achetés en magasin
Food purchased from Restaurants	102.5	2.5%	105.2	2.6%	108.2	2.9%	111.1	2.6%	114.1	2.7%	117.0	2.5%	Aliments achetés en restaurant
All Items	102.8	2.8%	104.7	1.9%	107.0	2.2%	109.1	2.0%	111.5	2.1%	114.1	2.4%	Tous les produits

Source: Statistics Canada, Table 326-0021

Calculations done by Dairy Farmers of Canada

CPI_2009_Official.xls

Source : Statistique Canada, Tableau 326-0021

Calculs réalisés par les Producteurs laitiers du Canada

INDUSTRIAL PRODUCT PRICE INDEXES FOR CANADA
INDICES DES PRIX DES PRODUITS INDUSTRIELS DU CANADA
(1997=100)

Products	2004		2005		2006		2007		2008		Produits
	Index / Indice	% ±	Index / Indice	% ±	Index / Indice	% ±	Index / Indice	% ±	Index / Indice	% ±	
Meat Products	105.7	1.6%	99.8	-6.5%	98.1	-1.7%	101.9	3.9%	102.3	0.4%	Produits de la viande
Dairy Products	119.5	1.5%	123.3	3.1%	125.7	1.9%	127.7	1.6%	131.0	2.6%	Produits laitiers
Fluid Milk Products	124.0	1.2%	126.0	1.6%	128.3	1.8%	131.3	2.3%	134.9	2.8%	Produits laitiers de consommation
Fresh Cream	122.4	1.8%	128.7	5.2%	131.6	2.3%	135.3	2.8%	138.6	2.4%	Crème fraîche
Whole Fluid Milk	121.1	1.0%	122.0	0.8%	123.6	1.3%	125.7	1.7%	128.4	2.2%	Lait entier de consommation
Skim Fluid Milk	134.0	1.4%	137.1	2.4%	141.0	2.8%	146.8	4.1%	153.6	4.6%	Lait écrémé de consommation
Industrial Milk Products	117.2	1.7%	121.8	3.9%	124.3	2.1%	125.9	1.3%	128.9	2.4%	Produits laitiers de transformation
Butter	113.6	3.9%	120.5	6.1%	121.7	1.0%	121.2	-0.4%	123.2	1.6%	Beurre
Margarine	116.8	2.2%	114.0	-2.4%	113.9	-0.1%	116.7	2.4%	127.5	9.3%	Margarine
Powdered Skim Milk	121.0	2.9%	128.5	6.1%	134.2	4.4%	142.9	6.5%	147.6	3.3%	Lait écrémé en poudre
Ice Cream & Ice Milk	104.9	3.5%	108.8	3.6%	110.8	1.8%	112.1	1.2%	116.4	3.8%	Crème et lait glacés
Other Dairy Products	121.5	0.4%	125.0	3.0%	127.1	1.7%	127.6	0.4%	132.3	3.7%	Autres produits laitiers
Cheese, Other than Whole Milk	123.0	0.9%	126.1	2.5%	128.9	2.2%	130.7	1.4%	133.7	2.3%	Fromage, sauf fait de lait entier
Cheddar & Processed Cheese	120.7	1.2%	125.2	3.7%	127.9	2.2%	129.4	1.2%	131.9	1.9%	Fromage fondu et cheddar
Meat, Fish & Dairy Products	109.7	1.2%	107.2	-2.3%	107.2	0.0%	110.0	2.6%	111.5	1.4%	Viande, poisson et produits laitiers

Source: Statistics Canada, Table 329-0038

Calculations done by Dairy Farmers of Canada

Industrial_09_Official.xls

Source : Statistique Canada, Tableau 329-0038

Calculs réalisés par les Producteurs laitiers du Canada

BUTTER AND MARGARINE RETAIL PRICES IN CANADA
PRIX AU DÉTAIL DU BEURRE ET DE LA MARGARINE AU CANADA
\$/454g

Products	1997	1998	1999	2000	2001	2002	2003	2004	2005	2006	2007	2008	Produits
Butter	2.90	2.97	2.97	3.04	3.19	3.27	3.39	3.50	3.78	3.82	3.79	3.84	Beurre
% ±	..	2.4%	0.0%	2.4%	4.9%	2.4%	3.8%	3.2%	8.0%	1.1%	-0.7%	1.3%	± %
Margarine	1.25	1.31	1.38	1.38	1.42	1.47	1.51	1.55	1.59	1.63	1.67	1.86	Margarine
% ±	..	4.8%	5.3%	0.0%	2.9%	3.5%	2.7%	2.5%	3.0%	2.5%	2.4%	11.3%	± %
Price Gap	1.65	1.66	1.59	1.66	1.77	1.80	1.88	1.95	2.18	2.18	2.12	1.98	Écart de prix
% Change	..	0.6%	-4.2%	4.4%	6.6%	1.5%	4.7%	3.7%	12.0%	0.0%	-3.0%	-6.6%	Changement en %

.. Not Available

Source: Retail Price - AC Nielsen

Calculations done by Dairy Farmers of Canada

.. Non disponible

Source : Prix au détail - AC Nielsen

Calculs réalisés par les Producteurs laitiers du Canada

RETAIL CHEESE PRICE¹
PRIX AU DÉTAIL DU FROMAGE¹
\$/kg

Provinces	2003		2004		2005		2006		2007		2008		Provinces
	Price / Prix	% ±	Price / Prix	% ±	Price / Prix	% ±	Price / Prix	% ±	Price / Prix	% ±	Price / Prix	% ±	
Maritimes	10.49	3.5%	10.79	2.9%	11.08	2.6%	11.56	4.4%	11.89	2.9%	12.22	2.8%	Maritimes
QC	11.87	2.2%	12.00	1.1%	12.63	5.2%	13.18	4.4%	13.46	2.1%	13.91	3.3%	QC
ON	10.66	4.1%	11.04	3.6%	11.47	3.9%	12.23	6.6%	12.19	-0.3%	12.43	2.0%	ON
Prairies	10.59	2.0%	10.77	1.7%	11.45	6.4%	11.88	3.7%	12.12	2.0%	12.46	2.8%	Prairies
BC	11.77	3.5%	12.02	2.1%	12.54	4.3%	12.90	2.9%	13.10	1.6%	13.50	3.1%	BC
Canada	11.08	3.1%	11.34	2.3%	11.87	4.7%	12.45	4.9%	12.62	1.4%	12.96	2.7%	Canada

Note: Retail sales include all chains and selected banners with at least \$150 million in retail sales per year.

¹ Price includes prepackaged cheese and deli.

Source: AC Nielsen

Calculations done by Dairy Farmers of Canada

chretail_prices.xls

Note : Les ventes au détail comprennent toutes les chaînes ainsi que les bannières d'épicerie dont les ventes totalisent au moins 150 millions de dollars.

¹ Le prix comprend le fromage préemballé et le fromage à la coupe

Source : AC Nielsen

Calculs réalisés par les Producteurs laitiers du Canada