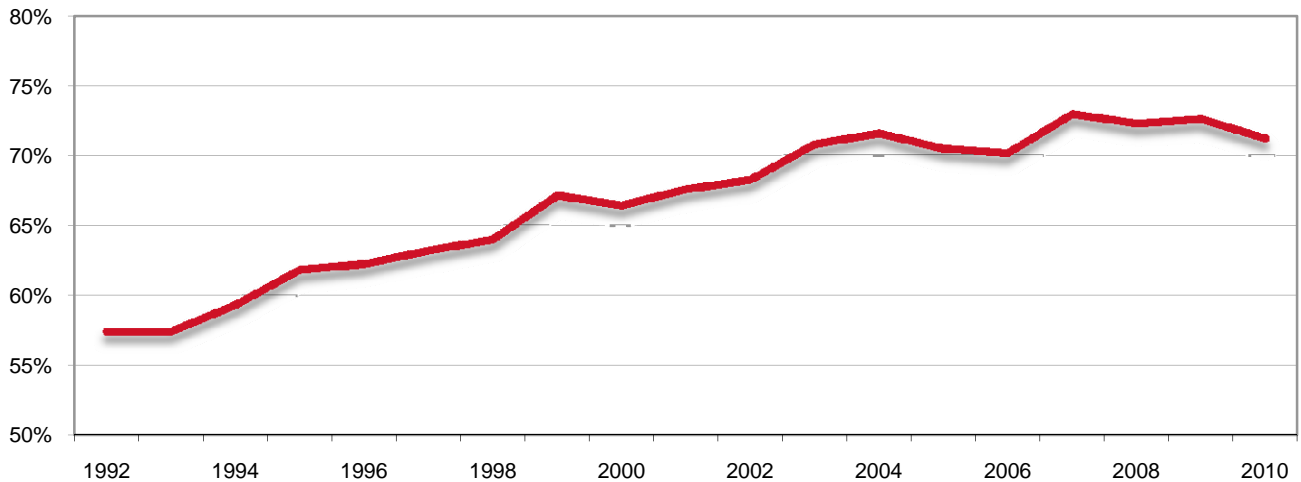




PERCENTAGE OF DAIRY COWS ENROLLED IN MILK RECORDING PROGRAMS
POURCENTAGE DE VACHES LAITIÈRES INSCRITES AUX PROGRAMMES DE CONTRÔLE LAITIER
(PUBLISHABLE AND MANAGEMENT / PUBLIABLE ET GESTION)

YEAR / ANNÉE	BC	AB	SK	MB	ON	QC	NB	NS	PE	NL	CANADA
2010	62.4	65.2	58.2	58.4	71.9	78.4	64.5	57.6	70.1	13.8	71.2
2009	60.9	65.7	60.0	55.4	73.1	81.4	62.5	61.7	73.3	12.3	72.6
2008	60.4	68.3	65.8	59.9	71.5	80.8	62.2	58.3	71.7	11.0	72.2
2007	61.2	70.0	62.3	57.9	74.0	79.7	65.0	60.3	75.7	10.3	72.9
2006	59.0	69.8	66.1	58.3	68.8	76.8	63.9	61.6	73.4	7.6	70.1
2005	58.7	67.9	63.1	59.6	69.3	77.4	69.6	63.3	75.6	6.7	70.5
2004	56.1	70.7	59.5	55.5	71.7	78.9	66.7	62.5	75.4	6.1	71.6
2003	54.9	65.2	61.2	58.3	71.0	78.4	68.0	60.4	73.2	21.9	70.8
2002	56.6	62.7	57.8	60.8	67.4	75.0	67.7	59.5	66.3	26.2	68.2
2001	58.8	61.3	64.9	58.7	66.9	73.0	67.9	60.8	66.6	24.7	67.6
2000	60.9	61.2	56.0	60.3	63.5	73.4	67.2	58.6	65.2	22.2	66.4
1999	62.3	69.2	59.2	59.3	64.1	72.9	67.3	56.4	60.4	20.0	67.1
1998	62.3	64.1	53.6	53.7	60.7	70.0	63.2	57.1	56.2	27.7	64.0
1997	62.5	64.4	53.5	49.2	61.6	67.4	63.5	58.6	59.8	34.3	63.2
1996	57.5	59.7	49.7	49.1	60.9	67.5	64.7	59.4	55.8	33.1	62.2
1995	57.2	58.7	45.5	50.3	62.0	66.2	63.8	60.2	53.0	33.6	61.8
1994	62.4	59.9	41.0	46.2	60.2	61.8	60.1	57.2	46.3	29.6	59.3
1993	63.0	56.8	40.4	46.2	57.7	59.6	60.1	56.0	45.9	35.7	57.4
1992	63.6	56.7	42.7	45.0	58.2	59.0	58.4	56.7	44.9	52.1	57.4

Percentage of Dairy Cows Enrolled in Milk Recording Programs
Pourcentage de vaches laitières inscrites aux programmes de contrôle laitier
(Publishable and Management / Publiable et gestion)



Source: Valacta
 Calculations done by AAFC-AID, Dairy Section

Source : Valacta
 Calculs réalisés par AAC-DIA, Secteur laitier