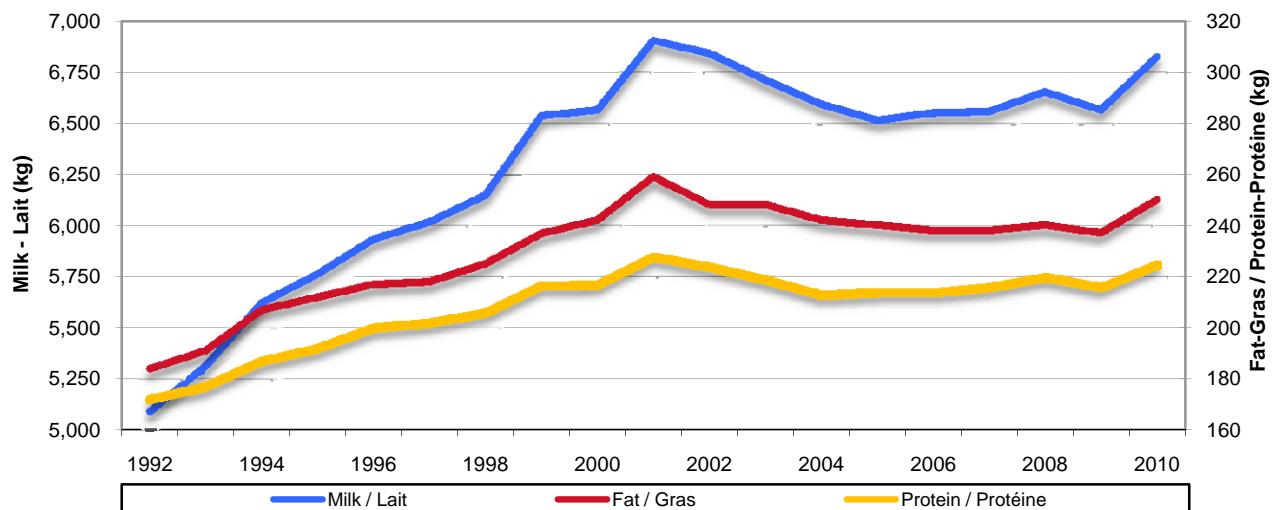




MILKING SHORTHORN / SHORTHORN LAITIÈRE
AVERAGE PRODUCTION BASED ON PUBLISHABLE RECORDS IN CANADA
PRODUCTION MOYENNE BASÉE SUR LES RELEVÉS PUBLIABLES AU CANADA

| YEAR / ANNÉE | NO. RECORDS / RELEVÉS | MILK / LAIT kg | FAT / GRAS kg | FAT / GRAS % | PROTEIN / PROTÉINE kg | PROTEIN / PROTÉINE % | BCA / MCR ¹ | | |
|--------------|-----------------------|-------------------|------------------|-----------------|--------------------------|-------------------------|------------------------|------------|--------------------|
| | | | | | | | MILK / LAIT | FAT / GRAS | PROTEIN / PROTÉINE |
| 2010 | 350 | 6,827 | 250 | 3.67 | 225 | 3.31 | 247 | 225 | 250 |
| 2009 | 325 | 6,566 | 237 | 3.63 | 216 | 3.30 | 232 | 209 | 234 |
| 2008 | 297 | 6,656 | 240 | 3.62 | 220 | 3.32 | 238 | 214 | 242 |
| 2007 | 272 | 6,558 | 238 | 3.65 | 216 | 3.31 | 236 | 213 | 239 |
| 2006 | 230 | 6,552 | 238 | 3.65 | 214 | 3.29 | 236 | 213 | 236 |
| 2005 | 217 | 6,516 | 240 | 3.70 | 214 | 3.30 | 234 | 214 | 236 |
| 2004 | 217 | 6,595 | 242 | 3.69 | 213 | 3.25 | 240 | 218 | 238 |
| 2003 | 217 | 6,713 | 248 | 3.71 | 219 | 3.28 | 241 | 221 | 241 |
| 2002 | 259 | 6,844 | 248 | 3.65 | 224 | 3.29 | 242 | 219 | 244 |
| 2001 | 255 | 6,906 | 259 | 3.75 | 228 | 3.30 | 244 | 227 | 247 |
| 2000 | 219 | 6,566 | 242 | 3.68 | 217 | 3.30 | 235 | 214 | 238 |
| 1999 | 271 | 6,538 | 237 | 3.62 | 217 | 3.32 | 236 | 211 | 239 |
| 1998 | 282 | 6,150 | 225 | 3.66 | 206 | 3.34 | 221 | 201 | 228 |
| 1997 | 269 | 6,018 | 218 | 3.62 | 202 | 3.36 | 216 | 195 | 223 |
| 1996 | 274 | 5,933 | 217 | 3.66 | 200 | 3.37 | 214 | 195 | 222 |
| 1995 | 276 | 5,763 | 212 | 3.68 | 192 | 3.33 | 204 | 187 | 210 |
| 1994 | 295 | 5,621 | 207 | 3.68 | 187 | 3.33 | 199 | 184 | 204 |
| 1993 | 290 | 5,312 | 191 | 3.60 | 177 | 3.33 | 190 | 170 | 194 |
| 1992 | 248 | 5,091 | 184 | 3.61 | 172 | 3.38 | 183 | 164 | 190 |

Milking Shorthorn / Shorthorn laitière
Average Production Based on Publishable Records in Canada
Production moyenne basée sur les relevés publiables au Canada



¹ BCA - Breed Class Average

Source: Valacta

Calculations done by AAFC-AID, Dairy Section

¹ MCR - Moyenne de la classe de la race

Source : Valacta

Calculs réalisés par AAC-DIA, Secteur laitier